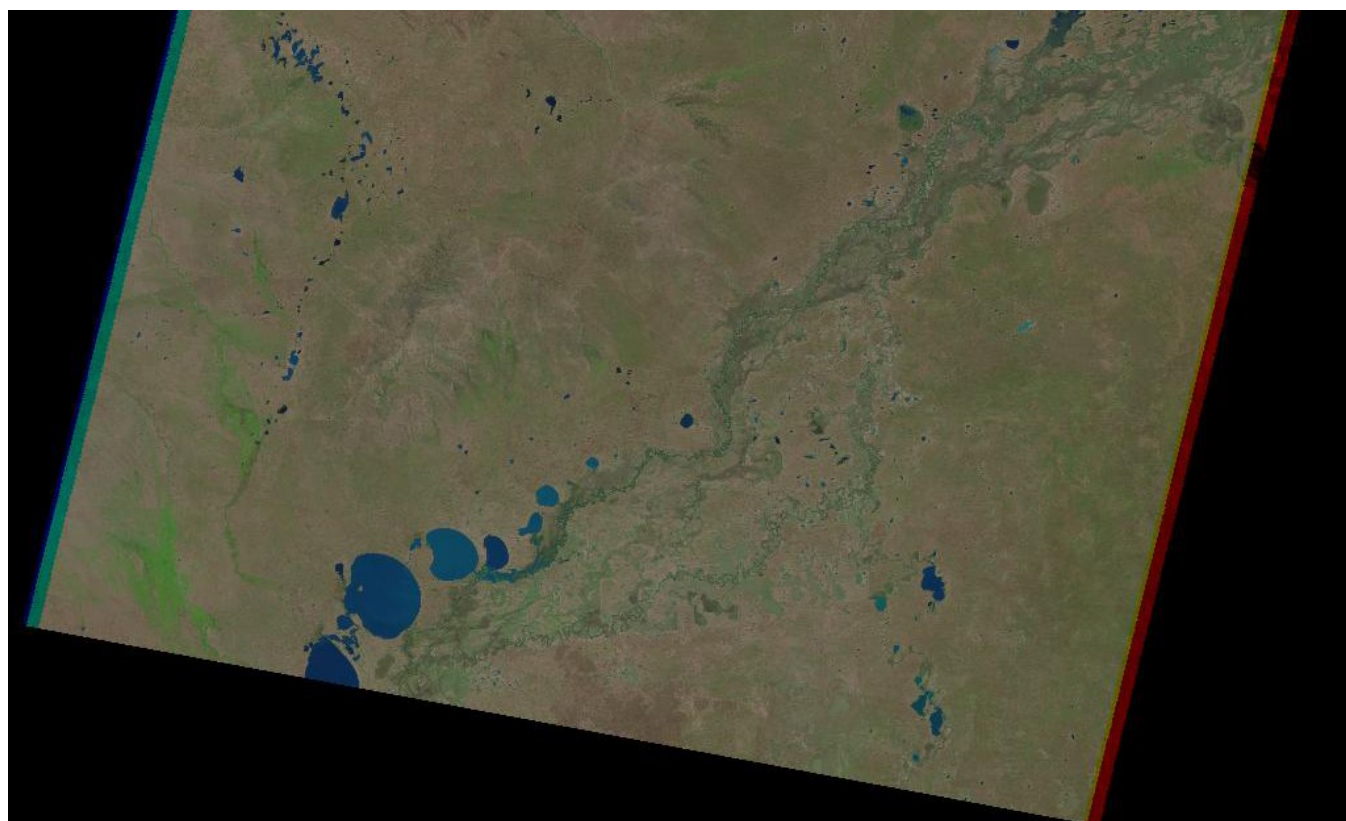


NCI eNews September

[View this email in your browser](#)



Taking the pulse of the Murray-Darling Basin

Researchers from UNSW have used Raijin and NCI's Landsat data stores to understand how vegetation in the Murray-Darling Basin has responded to rain and flooding across a quarter century of drought and deluge. [Read more.](#)



Public Holiday and quarterly maintenance

NCI systems will be offline for scheduled maintenance from 8am to 6pm AEST on Tuesday 2 October, and the NCI Helpdesk will not be available on Monday 1 October due to the ACT Labour Day Public Holiday. [Read more.](#)



NCI Director featured on Ask Fuzzy

Professor Sean Smith explains why supercomputers are so useful in this *Ask Fuzzy* [article](#) and [podcast](#).



NCMAS application information sessions

The NCMAS Secretariat are running online seminars to provide prospective applicants with an opportunity to learn more about the process on Tuesday 2 October. [Read more.](#)



Spring has sprung at the NCI building as we progress with the tender for the new machine, applications for which closed in mid-September.

Have questions? Need help?

Contact the NCI User Support Team:

help.nci.org.au

Access NCI's User Documentation portal:

opus.nci.org.au



Every month, NCI's User Services Team updates Raijin's software. This month, 10 new applications were installed, including:

- bowtie2/2.2.9
- fftw3-mkl/17.0.1.132
- namd/2.12

See the full list [here](#).



@NCINews



NCIAustralia



nci.org.au



NCINationalFacility

You are receiving this email because you are a registered NCI user. If you no longer want to be an NCI user, please disconnect your account on my.nci.org.au. To unsubscribe from receiving eNewsletters from NCI in the future, please [click here](#).

Stay informed. If you would like to be informed about research supported by NCI, upcoming training and events, [subscribe](#) to our eNewsletter.

© 2018 National Computational Infrastructure