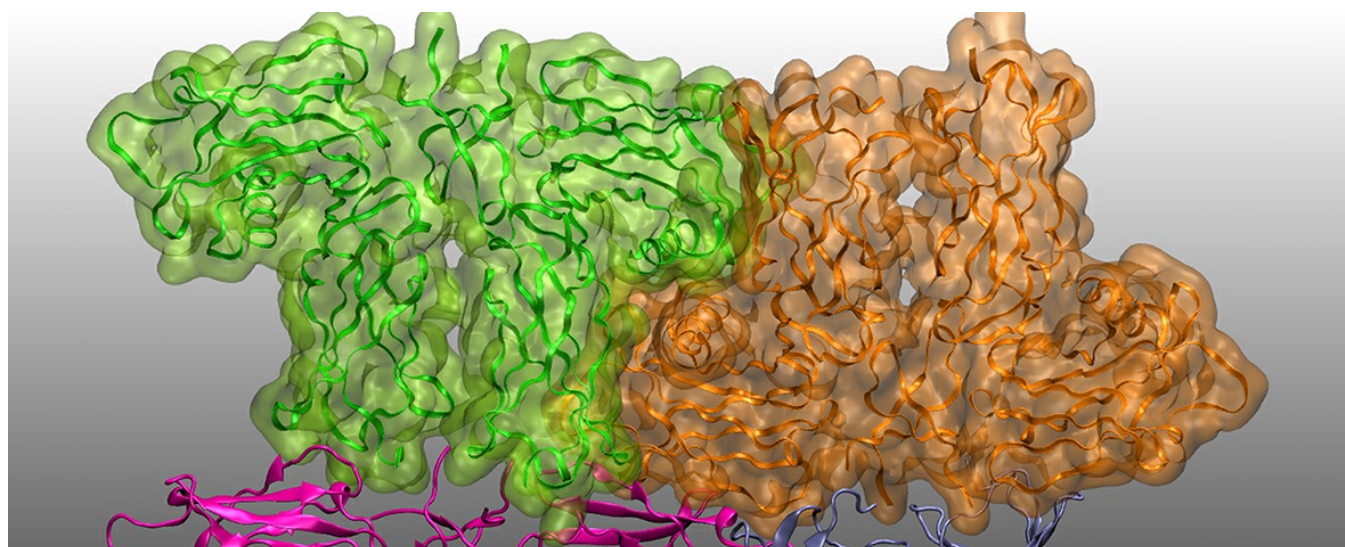


NCI eNews April 2017

[View this email in your browser](#)



Research: Studying biomolecules with atomic precision

Raijin makes it possible for University of Queensland researchers to 'watch' the movement of biomolecules as they interact -- such as the rotation of a hormone receptor when a hormone binds to it -- an event that is impossible to visualise directly. [Read more.](#)



HelpDesk unattended on Anzac Day

NCI systems will operate as normal on ANZAC Day, Tuesday 25 April, however, user support services will not be staffed. Support requests received on ANZAC Day will be addressed as soon as possible on Wednesday.



We're looking for a Specialist Programmer

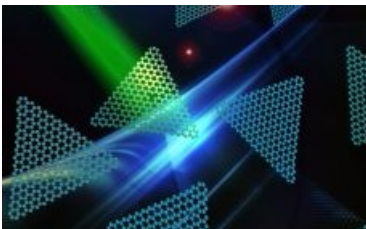
Play a pivotal role in developing and supporting NCI's registration and resource management systems. [Apply Here.](#)



NCI and 'Stargazing Live'

Did you catch 'Stargazing Live' on ABC TV?

Data from the SkyMapper telescope gets stored at NCI and accessed through our data catalogue. [Read more.](#)

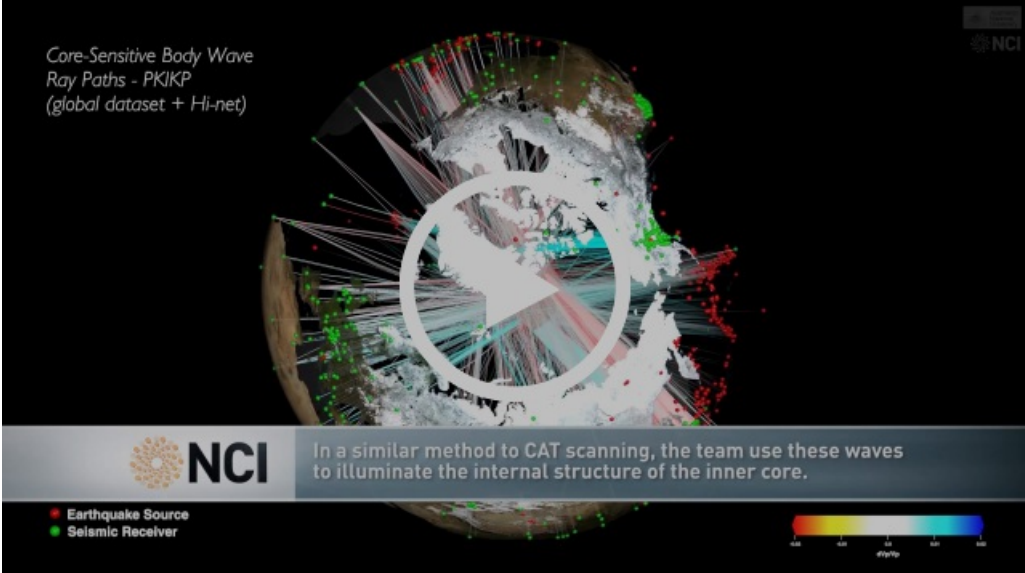


Research: Exploring 2D materials

Professor Mike Ford from UTS is using Raijin to study the electronic properties of 2D materials, which have incredible potential for building new devices such as all-optical chips. [Read more.](#)



Core-Sensitive Body Wave
Ray Paths - PKJKP
(global dataset + Hi-net)



NCI In a similar method to CAT scanning, the team use these waves to illuminate the internal structure of the inner core.

Earthquake Source
Seismic Receiver

Using computational algorithms in a method he describes as “like having an internal telescope into the Earth”, Professor Hrvoje Tkalčić and his team at ANU analyse readings of seismograms to find out about Earth's enigmatic inner core.

This animation was produced by Drew Whitehouse from NCI's VizLab team.

Frequently Asked Questions:

How do I use the new GPU systems at NCI?

The Pascal P100 GPUs are available to anyone with compute allocation on Raijin. Visit [NCI Help](#) for usage instructions.

Where can I find help documentation?

NCI maintains a User Guide at opus.nci.org.au, as well as detailed FAQs on Job Scheduling and Submission, Filesystems, and many other areas.



Every month, NCI's User Services Team updates Raijin's software. This month, 13 new applications were installed, including:

- bowtie2/2.3.1
- kallisto/0.43.1
- star/2.5.3a

See the full list [here](#).



@NCINews



NCIAustralia



nci.org.au



NCINationalFacility

You are receiving this email because you are a registered NCI user. If you no longer want to be an NCI user, please disconnect your account on my.nci.org.au. To unsubscribe from receiving eNewsletters from NCI in the future, please [click here](#).

Stay informed. If you would like to be informed about research supported by NCI, upcoming training and events, [subscribe](#) to our eNewsletter.

© 2017 National Computational Infrastructure